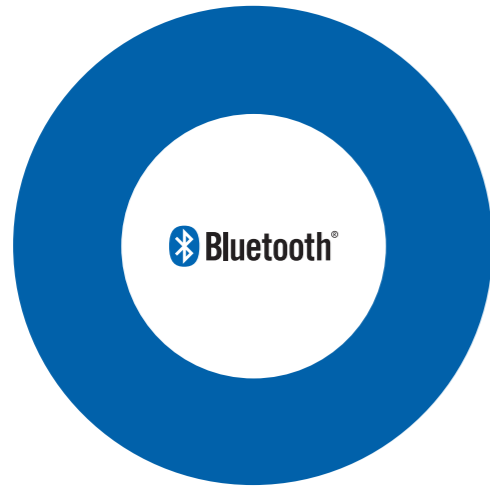


Bluetooth® Pairing Quick Guide



GLUCOCARD®

Read Me First

- Some smartphones, especially those that are not tested or approved by the manufacturer, may be incompatible with your meter.
- Descriptions are based on the default settings of the meter and smartphones.
- Some content may differ from your devices depending on the region, smartphone or ARK Care® VITA version.
- The ARK Care® VITA mobile app may not be compatible with all smartphones.
- ARK Care® VITA is subject to updates and some features may no longer be supported without prior notice. If you have questions about the app, contact ARKRAY Technical Customer Service: 800.566.8558, 24 hours a day, 7 days a week.
- Please read the meter's user manual before using the device to ensure safe and proper use.

Tips for Using Bluetooth®

- To avoid problems when connecting your meter to a smartphone, place the devices close to each other.
- Ensure that your meter and the other Bluetooth® device are within the connection range 32 feet (10 meters).
- Ensure that there are no obstacles between your meter and smartphone. If there are obstacles between the devices, the operating distance may be reduced.

1

Downloading the ARK Care® VITA Mobile App

ARK Care® VITA can be found on Google Play or App Store.

1. **Smartphone** Open the application store
2. **Smartphone** Search for the ARK Care® VITA app
3. **Smartphone** Download and install the app



The Bluetooth® word mark and logos are registered trademarks owned by Bluetooth SIG, Inc. and any use of such marks by the manufacturer, is under license. Android, Google Play and the Google Play logo are trademarks of Google Inc. Apple, the Apple logo and iPhone are trademarks of Apple Inc., registered in the U.S. and other countries. App Store is a service mark of Apple Inc.

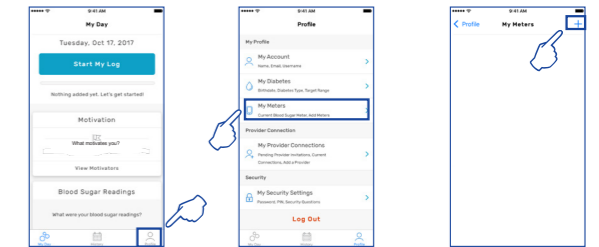
2

Pairing Meter and Smartphone

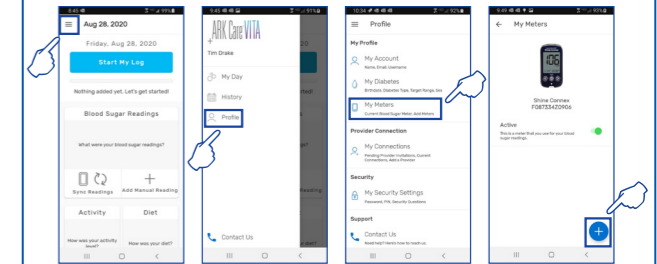
Pair your meter and smartphone to send your test results to ARK Care® VITA through Bluetooth® wireless connection.

1. **Smartphone** Turn on **Bluetooth®**
2. **Smartphone** Launch **ARK Care® Vita**
3. **Smartphone** Tap **Profile** → **My Meters** → +

For IOS:



For Android:

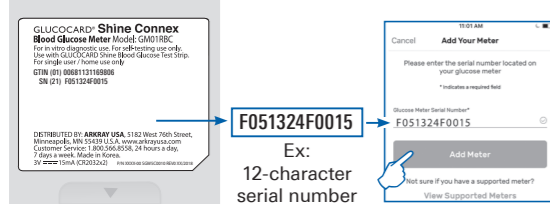


Note: Ensure that Bluetooth® is enabled in the settings menu of your smartphone before continuing to the next steps of this Quick Guide.

3

4. **Smartphone** Enter the serial number (found on the back of your GLUCOCARD Shine Connex Blood Glucose Meter) into the ARK Care® VITA app. Enter only the 12-character serial number. See example below.

5. **Smartphone** Tap **Add Meter**, and when prompted to "Set up your meter now" select **Yes**.



6. **Meter** With the meter turned off, press and hold the > button for three seconds to enter pairing mode.



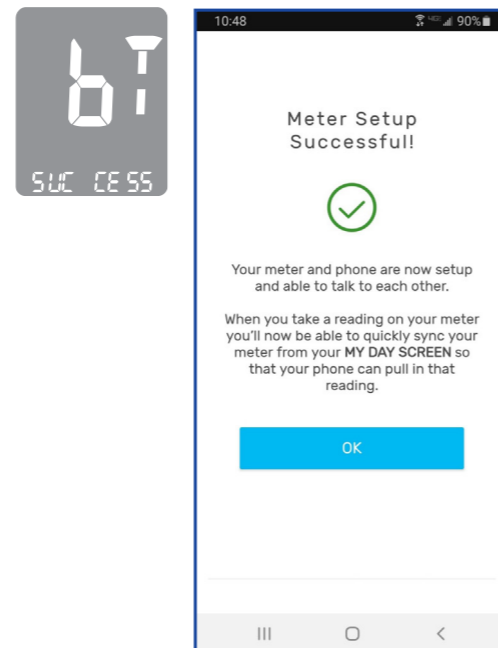
- bT** will display and **SEnd** will blink at the bottom of the screen and the Bluetooth® symbol will blink at the top.
7. **Smartphone** Press **Continue** in the app and press **Search** while the Bluetooth symbol and **SEnd** are flashing on your meter.

8. **Meter** **PAIr** and **YES** will flash on your meter. Press the center button (⓪) on your meter to complete the pairing process.



4

9. **Meter/Smartphone** When your meter and smartphone are paired (connected), the meter will display **SUCCESS** and ARK Care® VITA will display **Meter Setup Successful**. Tap **OK** in the ARK Care® VITA App.



5

10. **Meter** When the Bluetooth® pairing is finished, the meter will display **End** on the screen.



- Press the (⓪) button to go to the other settings.
- Press and hold the (⓪) button for 3 seconds to exit **SET** mode and turn off the meter.

Note: Once paired, all you need to do is tap **Sync Readings** to upload future test results to the ARK Care® VITA app.

6

ARKRAY Technical Customer Service:
800.566.8558,
24 hours a day, 7 days a week.

In case of emergency, please contact your healthcare professional or emergency medical response.

DISTRIBUTED BY:
ARKRAY USA
5182 West 76th Street
Minneapolis, MN 55439 U.S.A.
800.566.8558
www.arkrayusa.com

©ARKRAY USA, Inc. All Rights Reserved.
P/N 5526-02 Rev. 10/20
PGUAB-000015 Rev2 10/2020